

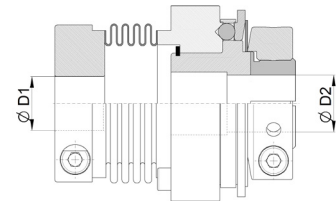
Safety Couplings I *for direct drives*

Large selection of safety coupling types with coupling attachment for shaft-shaft connection

The JAKOB safety couplings for direct drives are a combination of the release mechanism that has been tried and tested and optimized for decades with a coupling element to compensate for misalignments between the input and output shaft. Various versions from an extensive modular system of metal bellows or elastomer couplings can be selected. While the main specific feature of the Metal bellows is the very high torsional rigidity with low restoring forces, the elastomer couplings are characterized by their robustness, excellent damping properties and the possibility of plug-in assembly. Due to the screw connection between the coupling element and the safety part, in the event of damage or Changing the technical operating parameters means replacing the coupling attachment or the safety part anytime possible.

The following series are available as standard:

- Series SKB -> with clamping ring hub Ø D2
- Series SKY -> with cone clamping bush Ø D2
- Series SKW -> with feather key connection Ø D2



Series SKB - KP

with metal bellows 4W + clamping hub



Series SKB - EK

with elastomer star + clamping hub



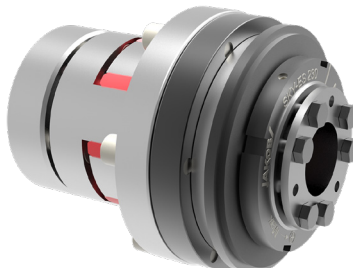
Series SKY - KS

with metal bellows 4W + conical clamping bush



Series SKY - ES

with elastomer spider + cone clamping ring hub



Series SKW - KP

with metal bellows 4W + clamping hub
(optionally with keyway)



Series SKW - EK

with elastomer spider + clamping hub
(optionally with keyway)



Further attachment combinations or hub variants with metal bellows or elastomer star, as well as customer-specific designs are possible on request.